

Vogue Realty Inc.

Real Estate Brokerage

P O Box 7

Kenora, On.

P9N 3X1



Tel: (807) 468-3326

Fax: (807) 468-3973

E Mail: vogue@voguerealty.ca

Internet: www.voguerealty.ca

See Also: www.realtor.ca

Pipestone Point –Lot 9

Offered @ \$175,000.00

1628 12-04-23 MLS #

LOT DESCRIPTION: Lot 9, Plan M-752, Township of Sioux narrows, District of Kenora, Pcl 43317, together with a Right of way over Part 1, Plan 23R-4808.

While this property is on mainland the road does not extend to the property.

Access is by winter ice road or by boat in summer.

Survey: Lot line.

Zoning: Unorganized

Drive: See above.

Taxes 2011: \$327.46

Ftge Chge: None

IMPROVEMENTS:

None

SERVICES:

There are no services to the property.

MORTGAGE:

Treat as clear.

Seller would consider holding a first mortgage.

EXTRAS:

South west exposure,
Great for setting up a Solar System,
Low profile
Rocky shoreline
Good water depth.
Sheltered Bay

All information is from sources deemed reliable, but no responsibility is assumed regarding accuracy thereof. Properties are submitted subject to errors, omissions, change of price or condition, prior to sale, rental or without notice. **All measurements approximate.**

Vogue Realty Inc.

Real Estate Brokerage

P O Box 7

Kenora, On.

P9N 3X1



Tel: (807) 468-3326

Fax: (807) 468-3973

E Mail: vogue@vogurealty.ca

Internet: www.vogurealty.ca

See Also: www.realtor.ca

Pipestone Point –Lot 9

Offered @ \$175,000.00

1628

12-04-23

MLS #

COMMENTS:

A 20 to 30 minute boat ride from town,
A beautiful location!
Many good building sites!
Being close to Pipestone Point Resort
offers many benefits,
-Walk over for an evening coffee or cocktail.
-Walk over for an evening steak or fish fry.
Extra company, book them in at the Lodge.
Plus, Plus, Plus.

SHOWINGS:

Prefer 24 hr notice.

POSSESSION:

Negotiable.

All information is from sources deemed reliable, but no responsibility is assumed regarding accuracy thereof.
Properties are submitted subject to errors, omissions, change of price or condition, prior to sale, rental or
without notice. **All measurements approximate.**

Vogue Realty Inc.

Real Estate Brokerage

P O Box 7

Kenora, On.

P9N 3X1



Tel: (807) 468-3326

Fax: (807) 468-3973

E Mail: vogue@vogurealty.ca

Internet: www.vogurealty.ca

See Also: www.realtor.ca

Pipestone Point –Lot 9

Offered @ \$175,000.00

1628

12-04-23

MLS #



All information is from sources deemed reliable, but no responsibility is assumed regarding accuracy thereof. Properties are submitted subject to errors, omissions, change of price or condition, prior to sale, rental or without notice. **All measurements approximate.**

Vogue Realty Inc.



Real Estate Brokerage

P O Box 7

Kenora, On.

P9N 3X1



Tel: (807) 468-3326

Fax: (807) 468-3973

E Mail: vogue@voguerealty.ca

Internet: www.voguerealty.ca

See Also: www.realtor.ca

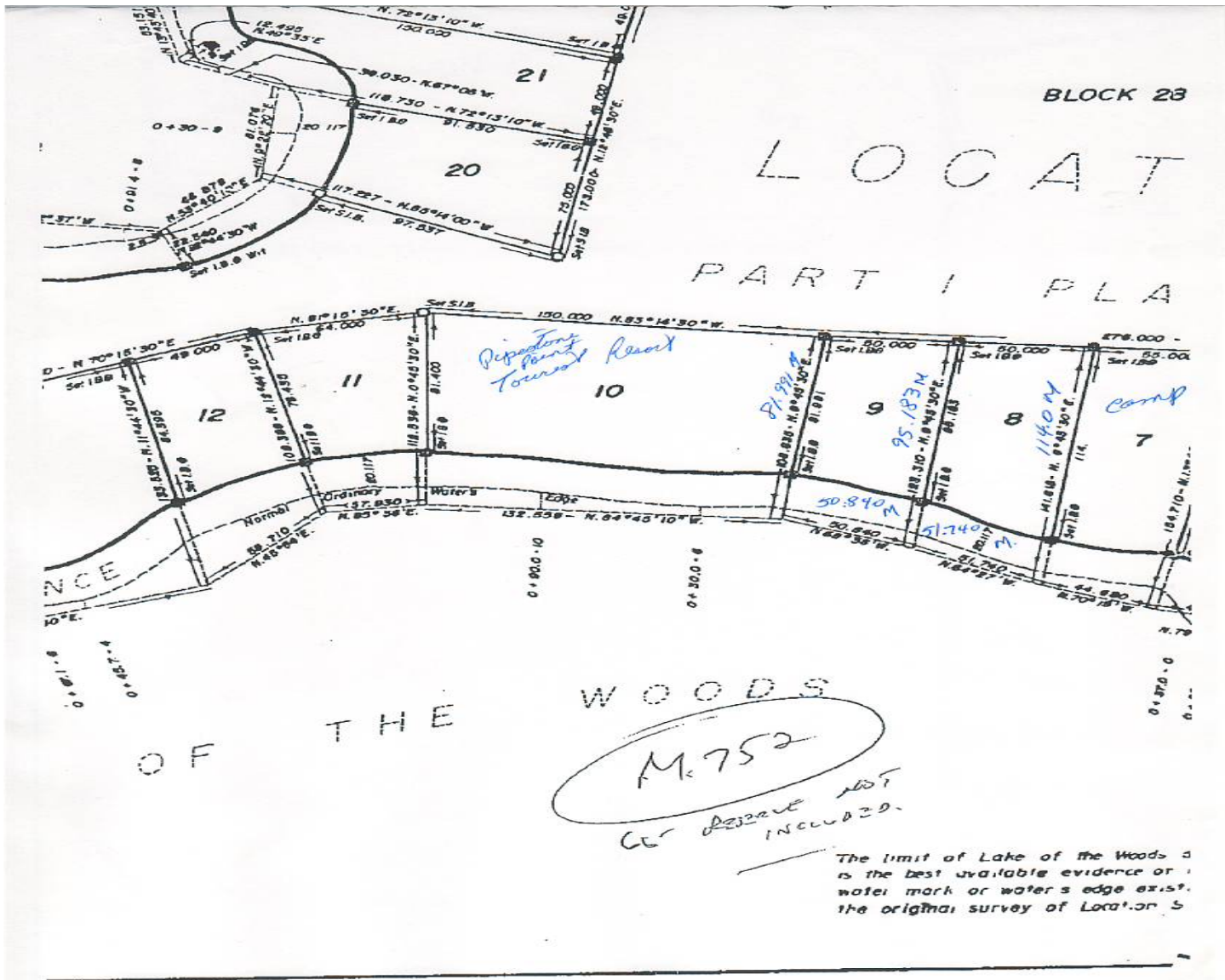
Pipestone Point - Lot 9

Offered @ \$175,000.00

1628

12-04-23

MLS #



All information is from sources deemed reliable, but no responsibility is assumed regarding accuracy thereof. Properties are submitted subject to errors, omissions, change of price or condition, prior to sale, rental or without notice. **All measurements approximate.**

Vogue Realty Inc.



Real Estate Brokerage

P O Box 7

Kenora, On.

P9N 3X1



Tel: (807) 468-3326

Fax: (807) 468-3973

E Mail: vogue@voguerealty.ca

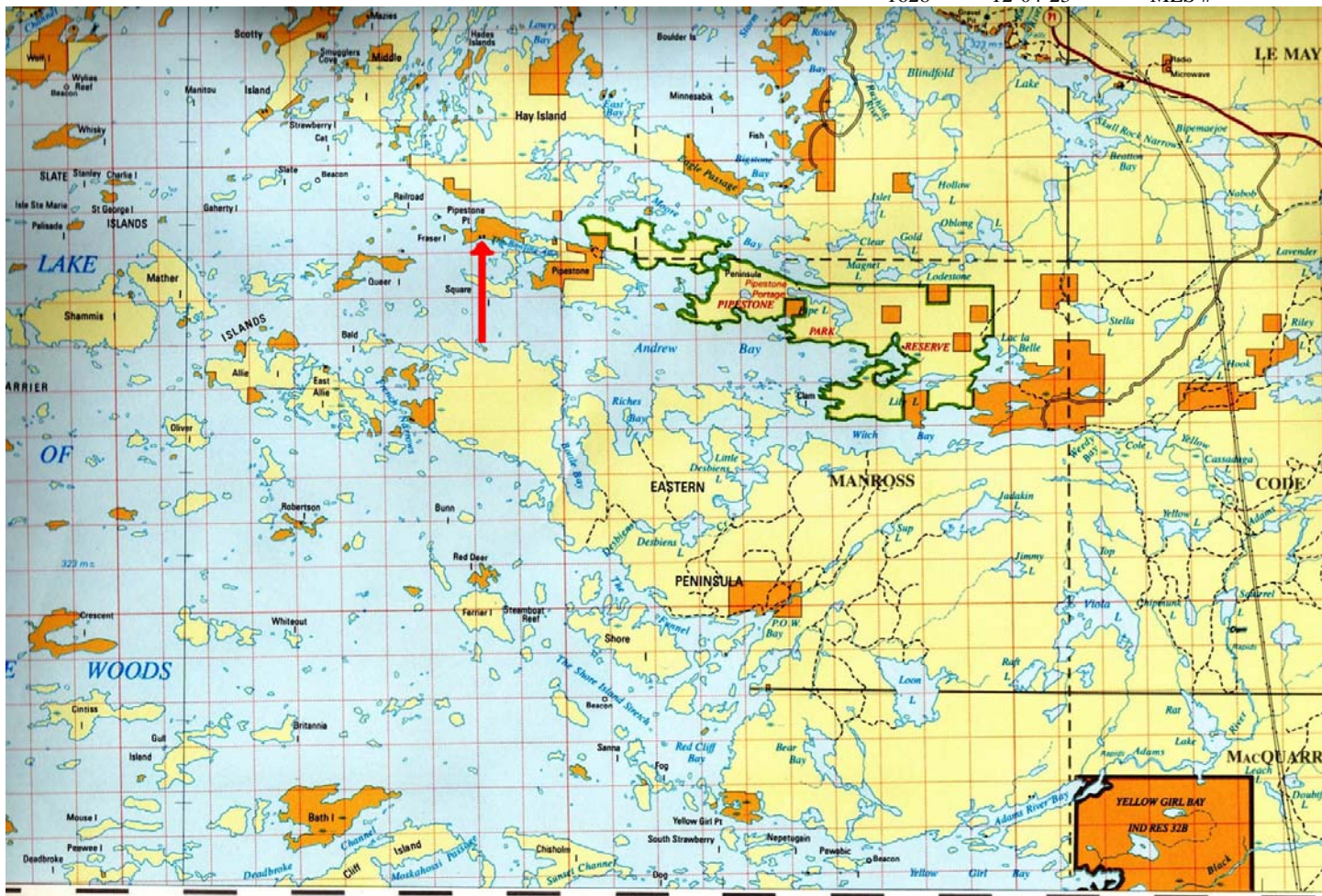
Internet: www.voguerealty.ca

See Also: www.realtor.ca

Pipestone Point –Lot 9

Offered @ \$175,000.00

1628 12-04-23 MLS #



All information is from sources deemed reliable, but no responsibility is assumed regarding accuracy thereof. Properties are submitted subject to errors, omissions, change of price or condition, prior to sale, rental or without notice. **All measurements approximate.**

Vogue Realty Inc.

Real Estate Brokerage

P O Box 7

Kenora, On.

P9N 3X1



Tel: (807) 468-3326

Fax: (807) 468-3973

E Mail: vogue@voguerealty.ca

Internet: www.voguerealty.ca

See Also: www.realtor.ca

Pipestone Point –Lot 9

Offered @ \$175,000.00

1628

12-04-23

MLS #



Lot 9 Pointer Sign on Left---Center Lot 9 For Sale---Lot 8 on Right—Showing shoreline

All information is from sources deemed reliable, but no responsibility is assumed regarding accuracy thereof. Properties are submitted subject to errors, omissions, change of price or condition, prior to sale, rental or without notice. **All measurements approximate.**

Vogue Realty Inc.

Real Estate Brokerage

P O Box 7

Kenora, On.

P9N 3X1



Tel: (807) 468-3326

Fax: (807) 468-3973

E Mail: vogue@voguerealty.ca

Internet: www.voguerealty.ca

See Also: www.realtor.ca

Pipestone Point –Lot 9

Offered @ \$175,000.00

1628

12-04-23

MLS #



Lot 8 and Lot 9 Shoreline Profile

All information is from sources deemed reliable, but no responsibility is assumed regarding accuracy thereof. Properties are submitted subject to errors, omissions, change of price or condition, prior to sale, rental or without notice. **All measurements approximate.**

Vogue Realty Inc.

Real Estate Brokerage

P O Box 7

Kenora, On.

P9N 3X1



Tel: (807) 468-3326

Fax: (807) 468-3973

E Mail: vogue@voguerealty.ca

Internet: www.voguerealty.ca

See Also: www.realtor.ca

Pipestone Point –Lot 9

Offered @ \$175,000.00

1628

12-04-23

MLS #



Neighbour to right of Lot 8

All information is from sources deemed reliable, but no responsibility is assumed regarding accuracy thereof. Properties are submitted subject to errors, omissions, change of price or condition, prior to sale, rental or without notice. **All measurements approximate.**

Vogue Realty Inc.

Real Estate Brokerage

P O Box 7

Kenora, On.

P9N 3X1



Tel: (807) 468-3326

Fax: (807) 468-3973

E Mail: vogue@vogurealty.ca

Internet: www.vogurealty.ca

See Also: www.realtor.ca

Pipestone Point –Lot 9

Offered @ \$175,000.00

1628

12-04-23

MLS #



Pipestone Point Resort on left of Lot 9

All information is from sources deemed reliable, but no responsibility is assumed regarding accuracy thereof. Properties are submitted subject to errors, omissions, change of price or condition, prior to sale, rental or without notice. **All measurements approximate.**